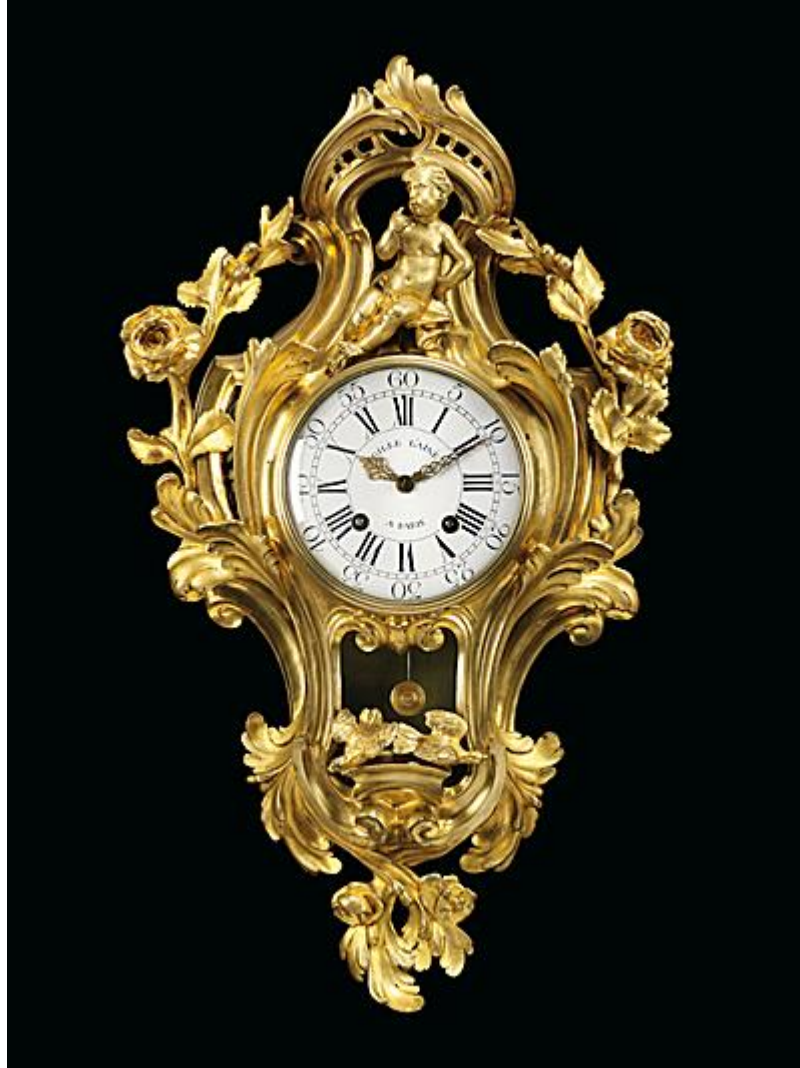


# MACKINNON

## FINE FURNITURE

---



### A FRENCH ORMOLU CARTEL CLOCK

**France, Mid 18th Century**

**By Gille L'Aîné, Paris**

A fine mid 18th century French ormolu cartel clock. The case surmounted by the figure of a thoughtful putto flanked by flowers over boldly cast foliate scrolls and an open aperture to reveal the pendulum bob framed by a pair of birds, the sides with pierced floral frets. The 7.25inch white enamel dial with bold black enamel Roman and Arabic numerals and a pair of matching pierced and engraved gilt hands. The movement with large plates and canted corners united by five tapering pillars pinned through the backplate, a pivoted verge escapement with silk suspension and outside count wheel strike on a bell. Ticking and striking, with a winding key and regulation key.

Pierre Francois Gille, called Gille l'Aîné (1690-1765) maître 1746

Height: 2' 5<sup>7</sup>/<sub>8</sub>" in (76 cm)  
Width: 1' 5<sup>3</sup>/<sub>8</sub>" in (44 cm)

Depth: 0' 5<sup>7</sup>/<sub>8</sub>" in (15 cm)

**Stock Number**

AD.333

5 Ryder Street - St James's - London, SW1Y 6PY

Phone: +44(0)20 7839 5671 Mobile: +44(0)7725 332 665

Email: [charlie@mackinnonfineart.com](mailto:charlie@mackinnonfineart.com) Web: [mackinnonfineart.com](http://mackinnonfineart.com)

