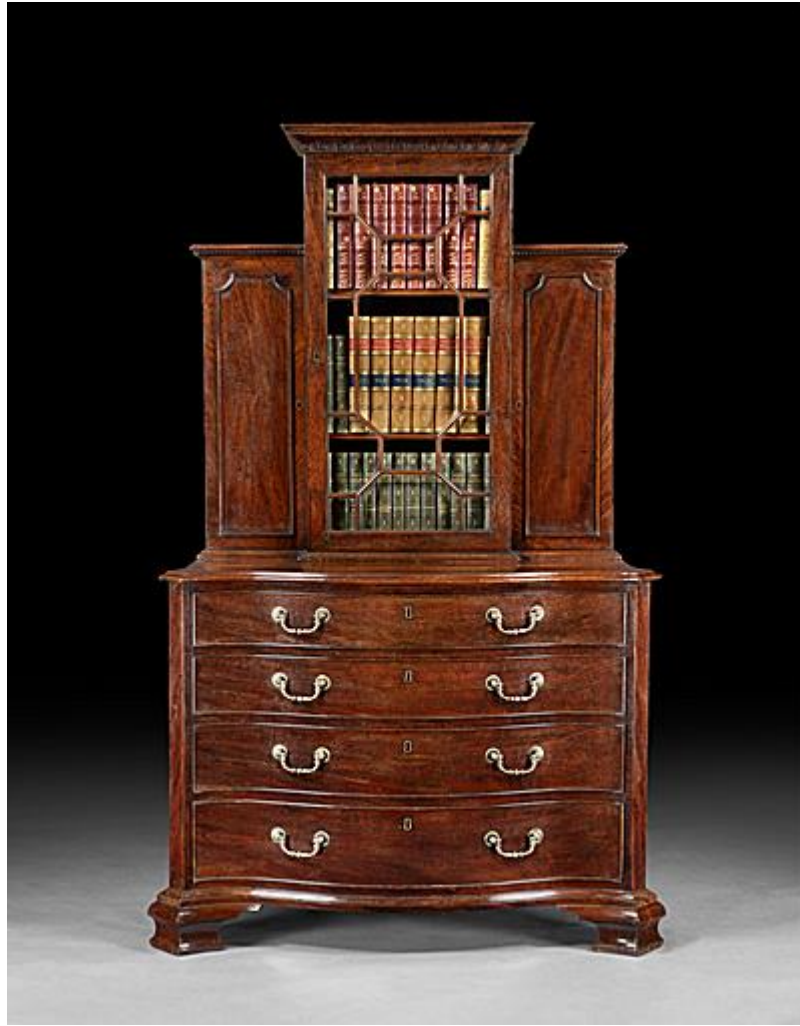


MACKINNON

FINE FURNITURE



A GEORGE III DRESSING CHEST CABINET

England, *circa* 1765

A very closely related cabinet was advertised by Hotspur in *Connoisseur* in 1966.

A very fine and rare George III Chippendale period mahogany dressing chest-cabinet. The upper section with central glazed display cabinet with a moulded plinth arcaded cornice, flanked by two mahogany cupboards with fielded panels each opening to reveal six pigeon-holes and a bank of four graduated mahogany lined drawers each with brass axe-head handles. The lower section in the form of a serpentine chest of drawers, with moulded edge, four graduated full length serpentine shaped drawers and bold bracket feet. The top drawer fully fitted with brushing slide, a mirror on a ratchet mechanism and numerous compartments.

The mahogany of particularly fine colour and patina throughout.

This superb piece of 18th century cabinet-furniture bears many features typical with those on documented Chippendale pieces, making an attribution to Thomas Chippendale highly plausible. In

particular, comparisons can be made to some of the furniture supplied to both Paxton and Dumfries House.

Height: 5' 9³/₄" in (177 cm)
Width: 3' 7¹/₄" in (110 cm)
Depth: 2' 0³/₄" in (63 cm)

Stock Number

AD.335

5 Ryder Street - St James's - London, SW1Y 6PY

Phone: +44(0)20 7839 5671 Mobile: +44(0)7725 332 665

Email: charlie@mackinnonfineart.com Web: mackinnonfineart.com

